

## A customer's view

*"Ultimately, our options for a manure storage solution came down to a separate manure storage building and a Talli-Jussi solution. Financial factors favoured Talli-Jussi, as the costs of building a separate manure storage facility would have been approximately five times higher. Other aspects also supported Talli-Jussi: the use of space, its appearance and, in particular, the procedure for emptying the unit were all convincing. It was particularly surprising how quickly the manure decomposed and transformed into compost."*

- Pasi Hurme, Lieto



## Contact us

### Biojussi

Väkiparrantie 25  
38200 Sastamala, Finland

Telephone +358 (0)50 3098 442

Email: [info@biojussi.fi](mailto:info@biojussi.fi)

## Company

Biojussi is a family business specialising in real estate and environmental management and in designing and constructing wastewater systems. The head of the company **Jukka Harjula** has been an entrepreneur in the environmental sector since 1992. He has operated as a seedling merchant, on environmental design and construction projects, and in real estate and dam maintenance positions. Now these experiences are used in designing and constructing composters and wastewater systems.

In addition to Talli-Jussi, we also supply solutions for filtering greywater, efficient real estate composters and thermal protection containers based on the same principle as a cellar. We also offer wastewater plans and systems, as well as environmental and landscaping services.



# Talli-Jussi

composter and storage container



Manure for fields,  
vegetable patches  
and gardens



## The Talli-Jussi manure collection system is the solution to the manure problems in your stables

When litter manure is stored in big bags and composted in a Talli-Jussi composter, the volume of the manure is almost halved. The composter creates material of a consistent and pure quality which you can use yourself or provide for collection.

Talli-Jussi is quick to install. It only requires a possible manure disposal notification to be made to the authorities. The mass can be stored in big bags or emptied onto a transportation platform with the help of valve bags.



**+358 (0)50 3098 442**

You can always reach us by phone! Call us and request a quote for a Talli-Jussi for your stables.

## How Talli-Jussi works



### Rapid installation

The Talli-Jussi unit is brought to your stables ready to install – all that is required is to excavate a hole.



### Bedding material choice

The composter works with any type of bedding material, but hemp provides the fastest turnaround.



### Composting

The volume of the manure will drop by 30% in the first month and by 10% in the second month.



### Collection and end-use

The big bags are collected and the composted manure is used to manufacture soil conditioner.

## Benefits



### Works with all bedding materials

Talli-Jussi has been tested with almost every bedding material. It works excellently with hemp, straw, peat, sawdust and more.



### Cost efficient solution

The purchase and installation costs of Talli-Jussi are only a fraction of the costs of building a traditional manure storage facility.



### No odour or unsightliness

Talli-Jussi's hermetically sealed structure keeps the odour of manure under control. The unit is installed into the ground, and it is almost undetectable.



### Efficient compost mass

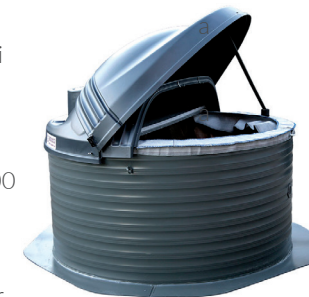
The compost created by Talli-Jussi compost immediately increases the efficiency of grass growth, among other things.

## Models

There are two different Talli-Jussi models (Talli-Jussi 2000 and 4000), with volumes of 2 or 4 cubic metres.

The Talli-Jussi 2000 has a solid-based big bag with hoisting loop. The Talli-Jussi 4000 is larger, with two big bags and the option of valve bag.

One Talli-Jussi 2000 or 4000 is needed to handle the litter manure produced by three horses. The bags can be lifted into storage, either to await collection or for further composting.



## Examples

The table below shows the average amount of composted manure developed using a Talli-Jussi. The calculations represent the winter season, when 25% more manure is produced than in the summer. Composting can be made more efficient with 100-watt jacket heating with a cable installed on the outer frame.

Horses	Raw manure	After 2 months
1 horse	1000-1500 l	490-735 l
2 horses	2000-3000 l	980-1470 l
3 horses	3000-4000 l	1470-1960 l
4 horses	4000-5000 l	1960-2450 l
5 horses	5000-6000 l	2450-2940 l
6 horses	6000-7000 l	2940-3430 l
7 horses	7000-8000 l	3430-5310 l